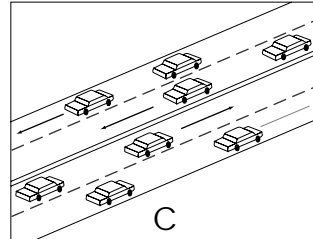
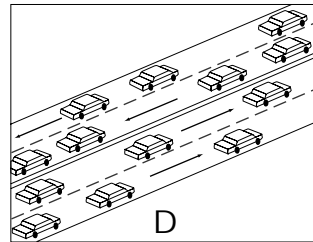


LOS Roadway Segments

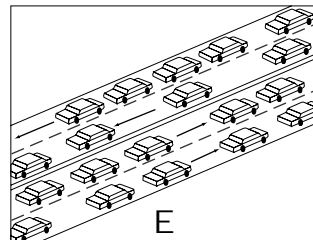
A Free flow, low traffic density



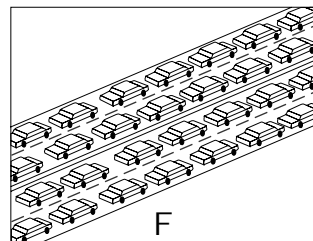
B Minimum delay, stable traffic flow



C Stable condition, movements somewhat restricted due to higher volumes, but not objectionable for motorists



D Movements more restricted, queues and delays may occur during short peaks, but lower demands occur often enough to permit clearing, preventing excessive backups

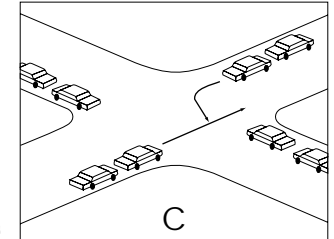


E Actual capacity of the roadway involves delay to all motorists due to congestion

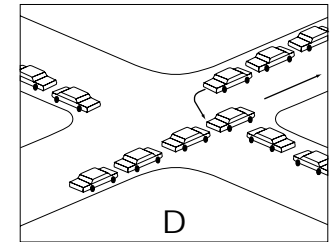
F Forced flow with demand volumes greater than capacity resulting in complete congestion

LOS Signalized Intersections

A No vehicle waits longer than one signal indication

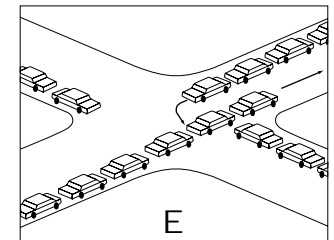


B On a rare occasion vehicles wait through more than one signal indication

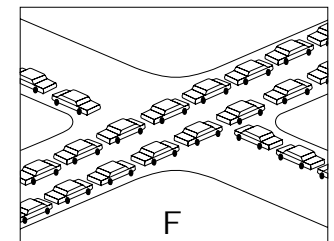


C Intermittently vehicles wait through more than one signal indication, occasionally backups may develop, traffic flow still stable and acceptable

D Delays at intersections may become extensive, but enough cycles with lower demand occur to permit periodic clearance, preventing excessive backups



E Very long queues may create lengthy delays



F Backups from locations downstream restrict or prevent movement of vehicles out of approach creating a "gridlock" condition